

SOYBEAN MEAL REPORT

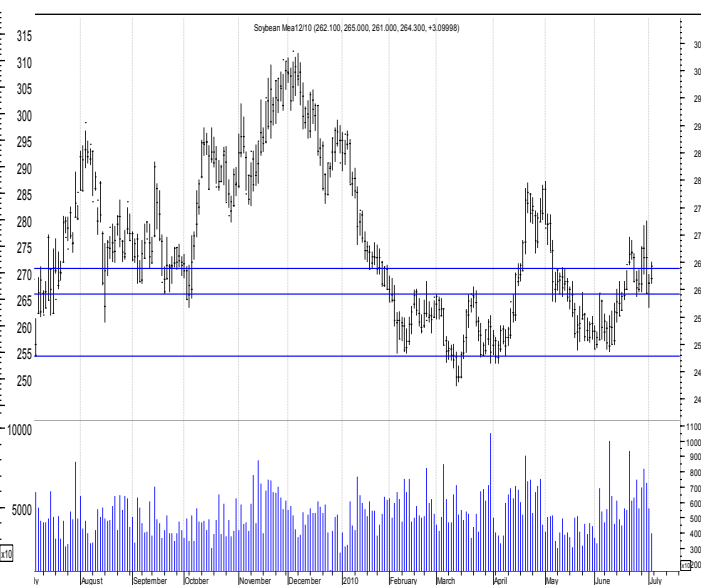
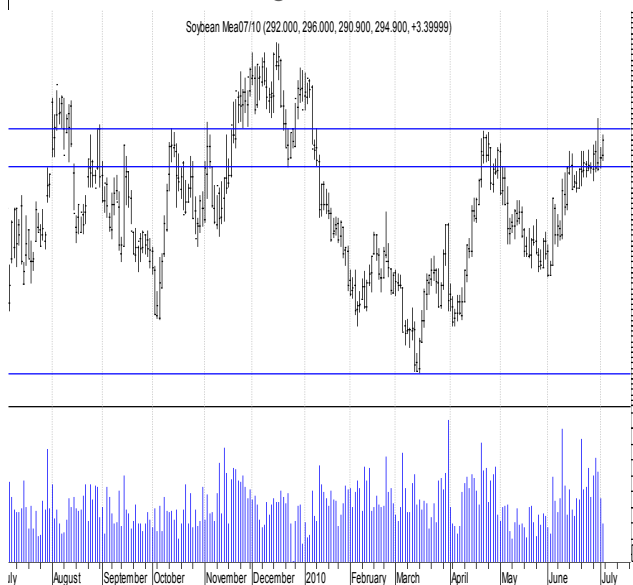
Monday, July 5, 2010

FUNDAMENTAL POINTS:

- US soybean stocks confirmed tight old crop at 571 million bu. Down 25 million bu on last year.
- US soymeal stocks higher than anticipated but lower than last year by 73000 tonnes.
- US May crush lower than April.
- US chicken meat exports to Russia able to resume. Pork sector flat.
- US new crop from the Delta due in 30-40 days.
- South American growers reluctant sellers.

July 10 MEAL SNAPSHOT:

Close 294.90	Short	Medium	Long
Trend	Sideways	Sideways	Down
Resistance	298.00	285.00	270.00
Support	290.00	254.00	240.00
	Last Week	Last Month	Last 12 Months
Historical Range	299.00 to 288.50	272.30 to 294.30	251.00 to 300.50
Change	+5.30	+21.40	N/A



TECHNICAL OVERVIEW & OUTLOOK

Tight June 1US soybean and soymeal stocks pushed July meal just below January highs, with price relief only likely once new crop Delta soybeans are available. July and August prices are expected to hold sideways to firmer until supplies improve and support from Canadian canola woes. New crop is a record area planted in the US and weather remain favorable.

Spread July—Dec is now at 30.6 Dec under July, with price correction likely on new crop supply in the absence on poor global recovery.

Range 1-2 weeks : 290.00 - 298.00 Jul 10
Range July—August : 260.00 - 296.00 Jul 10
Range July - Dec : 240.00 - 280.00 Dec 10

		47.5% soy meal ex Brisbane prompt	549
PNW Basis FOB – 47%	NA	35% canola meal Darling Downs—prompt	390
USG Basis FOB – 48%	NA	30% sun meal Darling Downs—prompt	N/A
Brazil Basis FOB – 48%	NA	43% cotton meal—Narrabri—prompt	310
Argentine Basis FOB	NA	67% Peruvian Fish Meal ex Capital City Prompt	1980
Australian dollar—Spot rate	0.8417	Meat/Bone Meal – 50% bulk ex Brisbane-prompt	565

This publication is produced by Farmarco Australia Pty Ltd, Auth. Rep # 328295, under FSR License # 325379. The information in this publication is intended for the person or entity to which it is addressed and may contain confidential and/or privileged material. If you have received this in error, you are asked to inform the sender as quickly as possible. Farmarco, its Directors and staff do not accept liability for the results of any action taken or not taken on the basis of recommendations or strategy alternatives provided to the client both verbally and in writing. As this advice has been prepared without considering your objectives, financial situation, or needs, you should, before acting on this advice, consider its appropriateness to your circumstances. Although data used to arrive at the above analysis and/or recommendation has been obtained from sources considered and believed to be both reliable and accurate no responsibility is accepted for any error or omission that may have occurred herein or for any opinions based thereon.